

Brake Caliper DT 400 FEA ... H - ST

spring activated – electrohydraulically released
Drum Brake according to DIN 15 435



| Features | Code |
|---|-------------------|
| Brake Caliper | D |
| Drum Brake | T |
| Frame size 400 | 400 |
| Spring activated | F |
| Electrohydraulically released | E |
| Automatic adjustment to accommodate friction block wear | A |
| Thrustors 452, 453 or 455 are available | 452 453 455 |
| Thrustor mounted horizontally | H |
| Material: steel | ST |

Example for ordering

Brake Caliper DT 400 FEA, thrustor 452, thrustor mounted horizontally, material: steel

DT 400 FEA - 452 H - ST

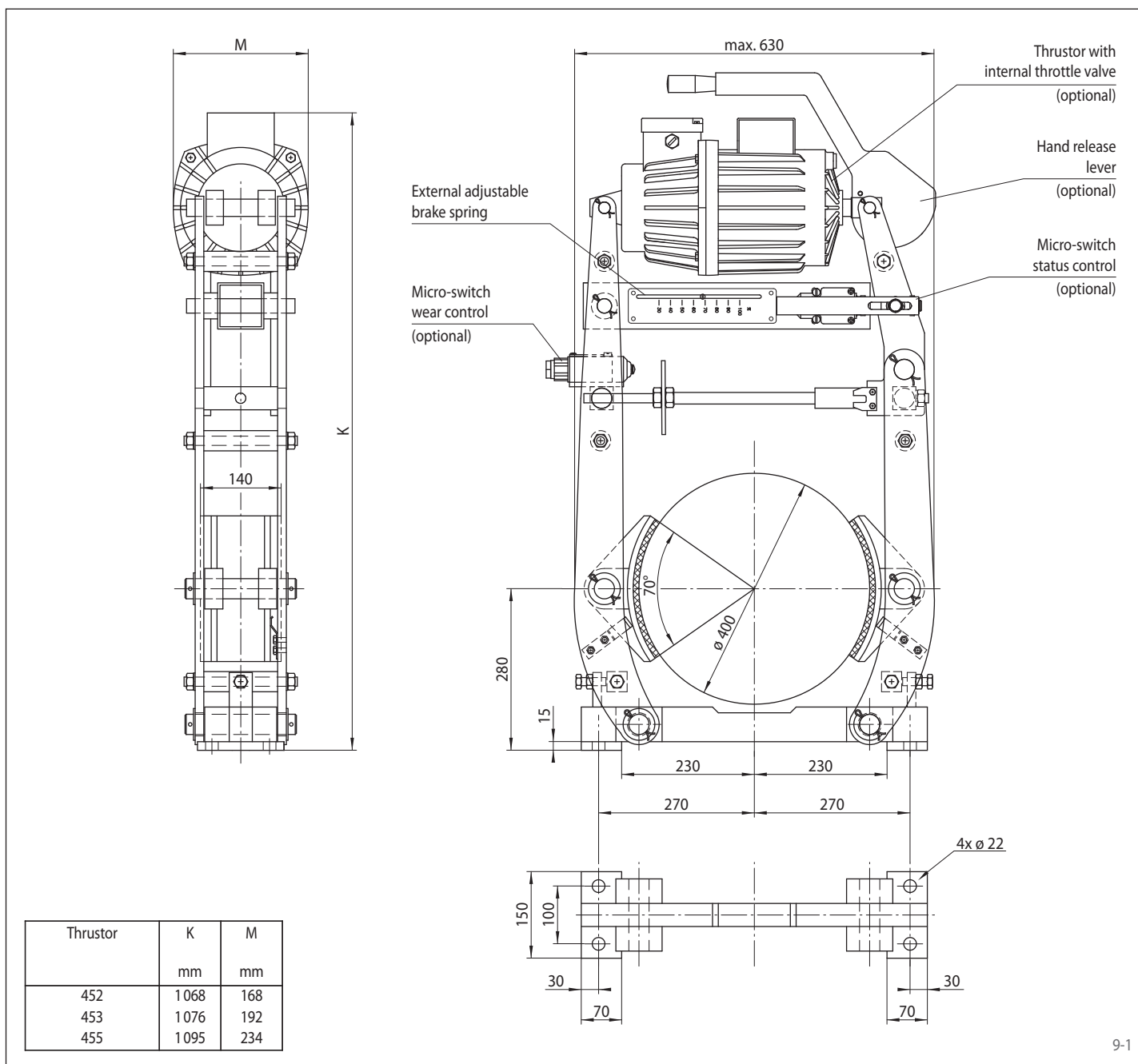
Technical Data

| | Brake Caliper DT 400 FEA - ... H - ST | | |
|--------------------------------------|---------------------------------------|-------------------|-------------------|
| | with thrustor 452 | with thrustor 453 | with thrustor 455 |
| Brake drum diameter | Braking torque | Braking torque | Braking torque |
| mm | Nm | Nm | Nm |
| 400 | 525 | 1 050 | 2 100 |
| Clamping force | 3 282 N | 6 563 N | 13 125 N |
| Braking torque adjustable (optional) | 20 - 100% | 20 - 100% | 20 - 100% |
| Power input | 180 W | 250 W | 350 W |
| Oil volume | 2,5 l | 3,5 l | 4,5 l |
| Voltage | 230/400 V | 230/400 V | 230/400 V |
| Weight | 140 kg | 145 kg | 155 kg |

The braking torques shown in the table are based on a theoretical friction coefficient of 0,4.

Brake Caliper DT 400 FEA ... H - ST

spring activated – electrohydraulically released
 Drum Brake according to DIN 15 435



9-1

Options

- Micro-switch wear control
- Micro-switch status control
- Hand release lever
- Thrustor with internal throttle valve
- Thrustor in heat resistant design
- Corrosion protected design
- Wider brake shoes and brake drums